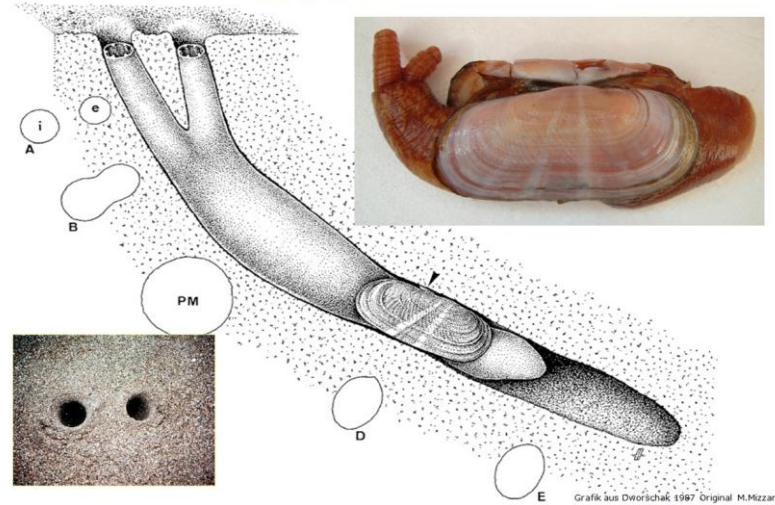




Sedimentbodenbewohner Zoobenthos
 Makrozoobenthos - MOLLUSCA - BIVALVIA
 Solecurtus strigilatus - Sandklaffmuschel



Sedimentbodenbewohner **Zoobenthos**

Makrozoobenthos – MOLLUSCA – BIVALVIA

Fam. Cardiidae - Herzmuscheln



Sedimentbodenbewohner **Zoobenthos**

Makrozoobenthos – MOLLUSCA – BIVALVIA

Fam. Naticidae – Mondschnellen, Nabelschnecken



Sedimentbodenbewohner **Zoobenthos**

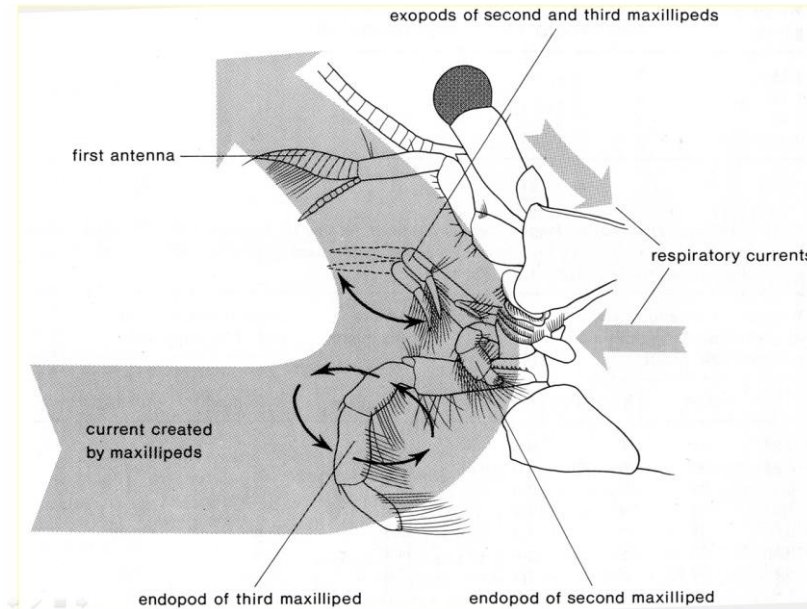
Makrozoobenthos – MOLLUSCA – Cephalopoda

Fam. Sepiolidae



Sedimentbodenbewohner **Zoobenthos**

Makrozoobenthos – CRUSTACEA
Decapoda (Zehnfüßkrebse) – Paguridea (Einsiedlerkrebse)



Sedimentbodenbewohner **Zoobenthos**

Makrozoobenthos – CRUSTACEA
Decapoda (Zehnfußkrebse) – Paguridea (Einsiedlerkrebse)

Anemoneneinsiedler *Eupagurus prideaux*
mit der Anemone *Adamsia paliata*



Großer Einsiedlerkreb - *Dardanus arrosor*
Schmarotzerrose - *Calliactis parasitica*



Sedimentbodenbewohner **Zoobenthos**

Makrozoobenthos – CRUSTACEA
Decapoda (Zehnfußkrebse) – Penaeoidea (Geißelgarnelen)

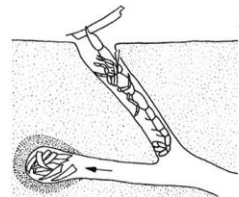


Sicyonia carinata (Furchengarnele)

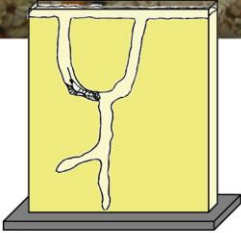
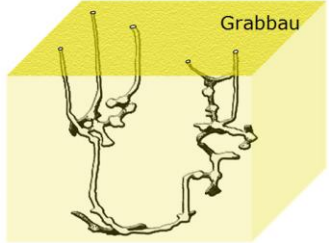


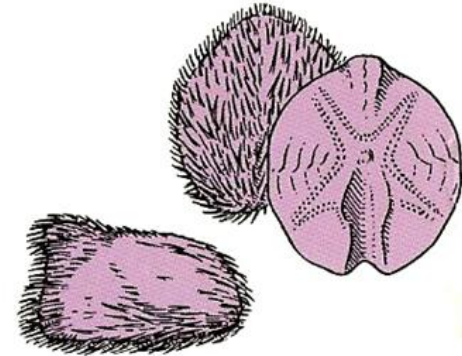
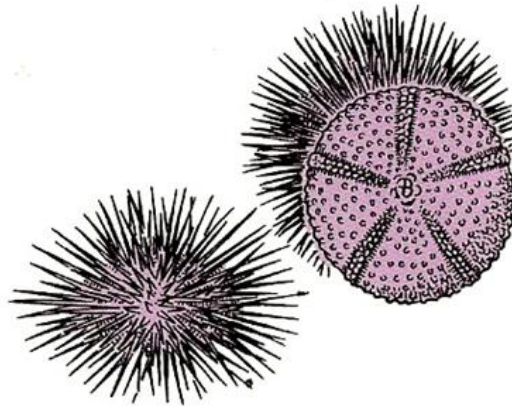
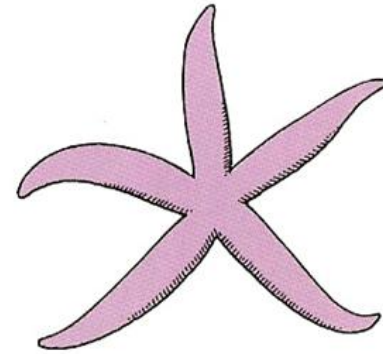
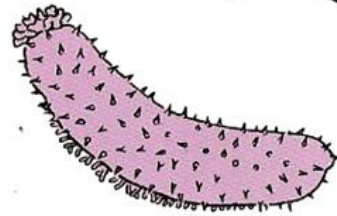
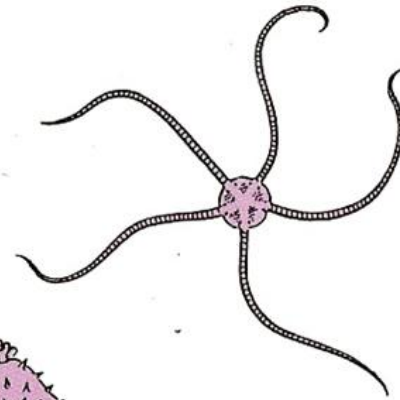
Sedimentbodenbewohner Zoobenthos

Makrozoobenthos – CRUSTACEA
Decapoda (Zehnfüßkrebse) – Thalassinidea (Maulwurfskrebse)



Materialimport in die Gährkammer



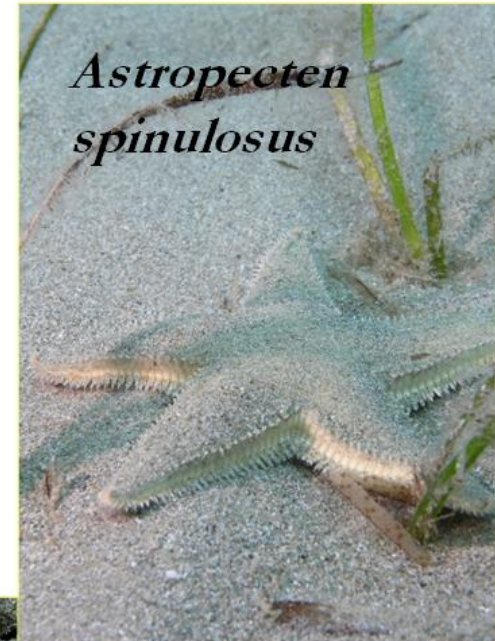


Sedimentbodenbewohner **Zoobenthos**

Makrozoobenthos – ECHINODERMATA
Asteroidea (Seesterne) Fam. Astropectinidae (Kammseesterne)



Familie mit zu Paxillen ausgebildeten Stacheln auf der Dorsalseite. Füßchen konisch.



Fotos: C. Müller Ibiza

